

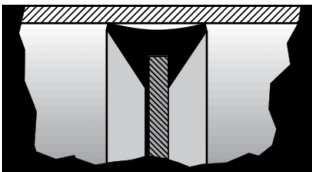
ORIGINAL LINE

FLAIRLINE

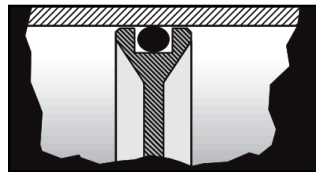
Series F, O/OLF, H & D



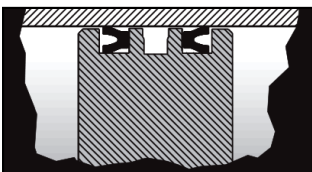
AVAILABLE IN FOUR PISTON TYPES



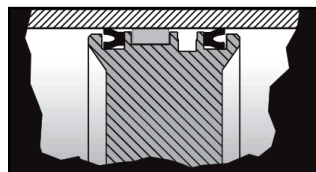
F TYPE



O/OLF TYPE



H TYPE



D TYPE

Features

- Standard Bore Sizes: 1 1/8, 1 1/2, 2, 2 1/2, 3 1/4, 4
- Stroke Sizes: Any stroke up to 130"
- Cushions available: either/both ends

Information

The Original Line is a family of double-acting cylinders, which can be used in nearly all types of applications where lightweight, economical, and durable actuators are required.

- Operating systems can be pneumatic or low pressure hydraulic
- OLF low friction series is ideal for applications where low minimum breakaway force is required
- D series is optimal for handling side load conditions
- Precision machined components and durable seals permit continuous operation in any environment

Specifications

- **Maximum Pressure:**
Pneumatic: 150 psi
Hydraulic: Consult Factory
- **Operating Temperature:**
0-200°F (Buna Seals)
-18-93°C (Buna Seals)
0-275°F (Viton Seals)
-18-135°C (Viton Seals)

FLAIRLINE WARRANTY

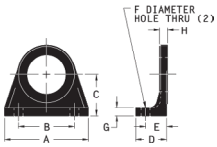
Flairline warrants each product against defects in material and workmanship for a period of one year from the date of manufacturing providing its use was in accordance with Flairline recommendations. If the product fails to perform as warranted, Flairline will, at its option, repair or replace the product free of charge. The company will not be liable for incidental or consequential damages. We make no other warranty, expressed or implied, including warranties of merchantability or fitness for a particular purpose.

ORIGINAL LINE

FLAIRLINE

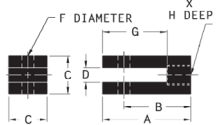
Series F, O/OLF, H & D

Mounting Accessories



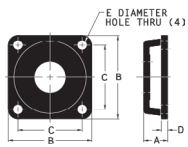
Mounting Nut included.

FOOT BRACKET									
Bore Size	No.	Dimensions							
		A	B	C	D	E	F	G	H
1/8	1-32-225	2 5/8	1 3/4	1 9/32	1	11/16	9/32	1/4	1/4
1/2	1-32-3	2 5/8	1 3/4	1 9/32	1	11/16	9/32	1/4	1/4
2, 2 1/2	1-32-4	3 1/4	2 1/4	1 15/16	1 1/32	11/16	11/32	1/4	1/4
3 1/4, 4	1-32-65	5 1/2	4	2 3/4	1 23/32	1 3/32	15/32	1/2	1/2



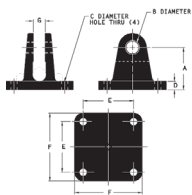
Connecting Pin included.

ROD CLEVIS									
Bore Size	No.	Dimensions							
		A	B	C	D	E	F	G	H
1/8	1-35-225	2 5/16	1 3/4	1	3/8	1/2-20	5/16	1 11/16	1 1/16
1 1/2, 2, 2 1/2	1-35-3	2 5/8	1 3/4	1	17/32	5/8-18	7/16	1 11/16	1 1/16
3 1/4, 4	1-35-65	3 3/8	2 5/8	1 1/2	2 1/32	1-14	1/2	1 9/16	1 1/4



Mounting Nut included.

FLANGE BRACKET						
Bore Size	No.	Dimensions				
		A	B	C	D	E
1/8	1-33-225	15/16	2 1/2	2	1/4	9/32
1 1/2, 2, 2 1/2	1-33-4	15/16	3 1/4	2 1/2	1/4	11/32
3 1/4, 4	1-33-65	1 19/32	5 1/4	4	1/2	15/32



Connecting Pin included.

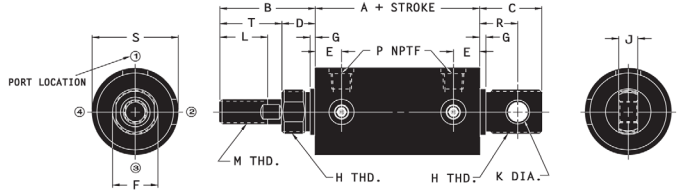
SWIVEL BRACKET								
Bore Size	No.	Dimensions						
		A	B	C	D	E	F	G
1/8, 1/2	1-34-3	1 1/4	5/16	9/32	5/16	1 3/4	2 1/4	17/32
2, 2 1/2	1-34-4	1 7/8	7/16	11/32	3/8	2 1/4	3	17/32
3 1/4, 4	1-34-65	2 7/8	1/2	15/32	1/2	3	4	25/32



Rod nut included on all F, O, H, D, M & DM type cylinders.

MOUNTING NUT			
Bore Size	No.	Dimensions	
		Height	Across Flats
1/8	1-38-16	11/32	1 3/8
1 1/2, 2, 2 1/2	1-38-20	19/32	1 5/8
3 1/4, 4	1-38-28	11/16	2 1/4

Dimensions



Notes: AH + STROKE (Series H/D).
For Series H/D add 1.0" to A dimension.

Dimension Reference	Cylinder Bore					
	1 1/8"	1 1/2"	2"	2 1/2"	3 1/4"	4"
A	2 25/32	3 5/16	3 5/16	3 5/16	4 11/16	4 11/16
B	2 1/8	2 1/2	2 1/2	2 1/2	3 19/32	3 19/32
C	1 1/16	1 1/4	1 5/8	1 5/8	1 11/16	1 11/16
D	5/8	7/8	7/8	7/8	1 7/32	1 7/32
E	19/32	11/16	11/16	11/16	31/32	31/32
F	1 1/16	1 3/16	1 3/16	1 3/16	1 11/16	1 11/16
G	1/8	5/32	5/32	5/32	5/32	5/32
H	1-14	1 1/8-12	1 1/8-12	1 1/8-12	1 5/8-12	1 5/8-12
J	1/2	1/2	1/2	1/2	3/4	3/4
K	5/16	5/16	7/16	7/16	1/2	1/2
L	1 1/8	1 1/4	1 1/4	1 1/4	1 7/8	1 7/8
M*	1/2-20	5/8-18	5/8-18	5/8-18	1-14	1-14
P-NPTF	1/8	1/4	1/4	1/4	1/2	1/2
R	11/16	7/8	1	1	1	1
S	1 3/8	1 3/4	2 1/4	2 3/4	3 1/2	4 1/4
T	1 1/2	1 5/8	1 5/8	1 5/8	2 3/8	2 3/8

ORIGINAL LINE

FLAIRLINE

Series F, O/OLF, H & D

Ordering Information

F 2 X 6 T = 5 1/2 H NT

PISTON	BORE SIZE	STROKE LENGTH	SPECIAL OPTIONS
F O OLF H D	1 1/8 1 1/2 2 2 1/2 3 1/4 4	Any length in inch increments or fraction thereof up to and including 130"	<p>CUSHIONS HEAD ONLY CAP ONLY BOTH METAL ROD SCRAPER EXTRA INLET PORT(S) Indicate location(s) (PP2, PP3, PP4) in cap or head end TANG AT 90° FROM STANDARD NO TANG STAINLESS STEEL CIRCUMFLEX KEYS STOP TUBES CUSTOM T DIMENSION (ROD EXTENSION) SPECIAL L DIMENSION (THREAD LENGTH) SPECIAL M DIMENSION (THREAD SIZE) SPECIAL M DIMENSION (TAPPED HOLE IN ROD END) STAINLESS STEEL RODS</p> <p>H C HC MRS TANG 90° NT SS KEYS CONSULT FACTORY T = Dimension L = Dimension M = Size or Plain Rod End M = Size and depth SS ROD</p>

Replacement Parts

PK KIT F 2

PISTON	BORE SIZE
F O OLF H D	1 1/8 1 1/2 2 2 1/2 3 1/4 4

PROUD TO BE
MADE IN AMERICA