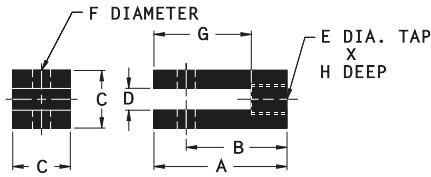
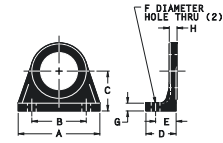


CROSSOVER CYLINDERS I / IDE / DI / SI / DSI



ROD CLEVIS

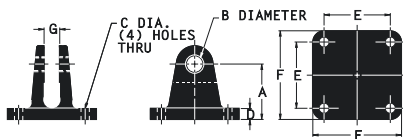
Bore Size	Number	DIMENSIONS							
		A	B	C	D	E	F	G	H
1 ¹ / ₈	2-35-225	1 ³ / ₄	1 ¹³ / ₃₂	3/4	5/16	3/8-16	1/4	1	3/4
1 ¹ / ₂	2-35-3	2 ¹ / ₄	1 ³ / ₄	1	3/8	1/2-13	5/16	1 ³ / ₁₆	1 ¹ / ₁₆
2	2-35-4	2 ¹ / ₄	1 ³ / ₄	1	3/8	5/8-11	5/16	1 ³ / ₁₆	1 ¹ / ₁₆
2 ¹ / ₂ , 3	2-35-6	2 ¹ / ₁₆	2 ¹ / ₁₆	1 ¹ / ₈	1/2	3/4-10	7/16	1 ³ / ₄	1 ³ / ₁₆



FOOT BRACKET

Bore Size	Number	DIMENSIONS							
		A	B	C	D	E	F	G	H
1 ¹ / ₈	2-32-225	1 ⁵ / ₈	1	1 ⁷ / ₃₂	1	5/8	17/64	1/4	1/4
1 ¹ / ₂ , 2 CAP END	2-32-4	3	1 ¹¹ / ₁₆	1 ¹ / ₂	1 ¹⁷ / ₃₂	57/64	9/32	5/16	5/16
1 ¹ / ₂ , 2 HEAD END	2-32-4A	3	1 ¹¹ / ₁₆	1 ¹ / ₂	1 ¹⁷ / ₃₂	57/64	9/32	5/16	5/16
2 ¹ / ₂ , 3	2-32-6	4	2 ¹ / ₄	2	2 ³ / ₃₂	1 ⁷ / ₃₂	13/32	3/8	3/8

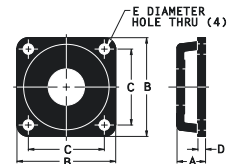
Mounting nut included.



SWIVEL BRACKET

Bore Size	Number	DIMENSIONS						
		A	B	C	D	E	F	G
1 ¹ / ₈	2-34-225	1 ⁷ / ₃₂	1/4	9/32	5/16	1 ³ / ₄	2 ¹ / ₄	3/8
1 ¹ / ₂ , 2	2-34-4	1 ³ / ₄	5/16	9/32	5/16	2 ¹ / ₄	3	1/2
2 ¹ / ₂ , 3	2-34-6	2 ¹ / ₈	7/16	13/32	3/8	3	4	5/8

Connecting pin included.



FLANGE BRACKET

Bore Size	Number	DIMENSIONS				
		A	B	C	D	E
1 ¹ / ₈	2-33-225	1 ¹¹ / ₁₆	2 ¹ / ₂	2	1/4	9/32
1 ¹ / ₂ , 2 CAP END	2-33-4	1 ¹⁹ / ₃₂	3 ¹ / ₄	2 ¹ / ₂	5/16	9/32
1 ¹ / ₂ , 2 HEAD END	2-33-4A	1 ¹⁹ / ₃₂	3 ¹ / ₄	2 ¹ / ₂	5/16	9/32
2 ¹ / ₂ , 3	2-33-6	2 ²³ / ₃₂	4 ¹ / ₂	3 ³ / ₈	3/8	13/32

Mounting nut included.



MOUNTING NUT

Bore Size	Number	DIMENSIONS	
		Height	Across Flats
1 ¹ / ₈	2-38-12	3/8	1 ¹ / ₁₆
1 ¹ / ₂ , 2 CAP (H Dimension)	2-38-18	15/32	1 ¹ / ₁₆
1 ¹ / ₂ , 2 HEAD (HH Dimension)	1-38-16	11/32	1 ³ / ₈
2 ¹ / ₂ , 3	2-38-24	25/32	2 ¹ / ₁₆