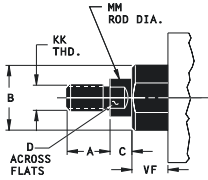


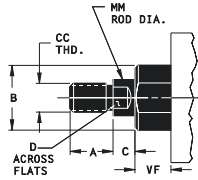
ROUND BODY NFPA INTERCHANGEABLE CYLINDERS FI / OI / OILF / OIM / FIDE / OIDE



SMALL MALE (NFPA SM)*

Bore Size	DIMENSIONS						
	A	B	C	D	KK	MM	VF
1 1/2, 2, 2 1/2	3/4	1 1/8	3/8	1/2	7/16-20	5/8	5/8
3 1/4, 4	1 1/8	1 1/2	1/2	7/8	3/4-16	1	7/8

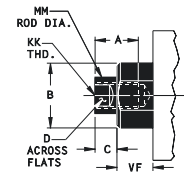
*Standard on all Flairline NFPA interchangeable cylinders. When ordering, if no rod end style is specified, style SM will be supplied. Rod eye and rod clevis fit style SM. Rod nut included.



INTERMEDIATE MALE (NFPA IM)*

Bore Size	DIMENSIONS						
	A	B	C	CC	D	MM	VF
1 1/2, 2, 2 1/2	3/4	1 1/8	3/8	1/2-20	1/2	5/8	5/8
3 1/4, 4	1 1/8	1 1/2	1/2	7/8-14	7/8	1	7/8

*Optional.
Rod nut included.

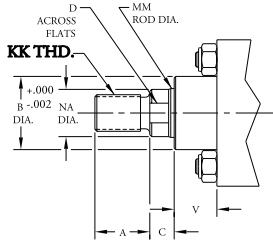


SHORT FEMALE (NFPA SF*)

Bore Size	DIMENSIONS						
	A	B	C	D	KK	MM	VF
1 1/2, 2, 2 1/2	3/4	1 1/8	3/8	1/2	7/16-20	5/8	5/8
3 1/4, 4	1 1/8	1 1/2	1/2	7/8	3/4-16	1	7/8

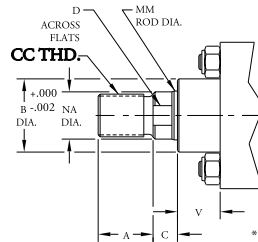
*Optional.

SMALL MALE (NFPA SM)*



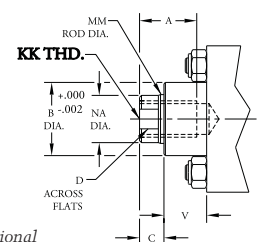
*Standard on all Flairline NFPA cylinders. When ordering, if no rod end style is specified, style SM will be supplied.

INTERMEDIATE MALE (NFPA IM)*



*Optional

SHORT FEMALE (NFPA SF)*



*Optional

ROD DIAMETER	DIMENSION								ROD DIAMETER	DIMENSION							
	A	B	C	CC	D	KK	NA	V		A	B	C	CC	D	KK	NA	V
5/8	3/4	1.124	3/8	1/2-20	1/2	7/16-20	.593	5/8	1 3/8	1 5/8	1.999	5/8	1 1/4-12	1 1/8	1-14	1.343	1
1	1 1/8	1.499	1/2	7/8-14	7/8	3/4-16	.968	7/8*	1 3/4	2	2.374	3/4	1 1/2-12	1 1/2	1 1/4-12	1.703	1 1/8

*1 1/2" bore, V=1/2